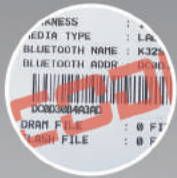


120 mm/s

SMOOTH PRINTING
WITHOUT PAPER JAMS

Long Standby 15 Days

Compatible ZPL, TSPL,
CPCL, ESC/POS, JPL



Two-color printing

Watermark Printing Two-color Printing



Zinc alloy rack

Lightweight, High Strength And More Durable



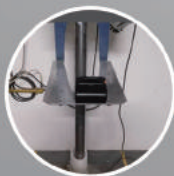
NFC

Mobile Phone Immediately Link with One Touch

The Following Tests Have Third-Party Laboratory Certification



IP54 Water Proof And
Dustproof Test Report



1.5m Drop Test Report

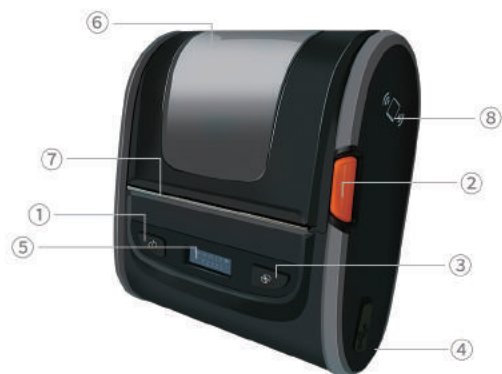


Static Test Report



High And Low Temperature
Test Report

Product Description



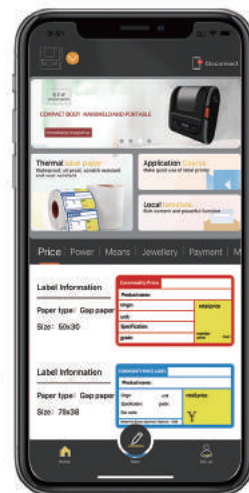
- ① Power/Settings Button
- ② Paper Feed/Menu Key
- ③ NFC Logo (Touch And Connect)
- ④ USB/Power Input Socket
- ⑤ OLED Display
- ⑥ Paper Compartment Cover
- ⑦ Paper Tearing Blade
- ⑧ Open Button



① PAPER WAREHOUSE



Exclusive App YinYin
Make Printing Easier



Harsh Environment

High And Low Temperature Design, Able To Resist Harsh Environment The Conditions Still Work Normally.

Dual-mode Bluetooth

Connect Multiple Android Phones At The Same Time, iPhone Can Also Print At High Speed, The Transmission Speed Can Be Up To 40KB/S.

Multiple Instructions

Support CPCL, TSPL, ESC Command Command Automatic Identify The Switch.

Rich Interface

TypeC Interface, Fast Charge, USB Positive And Negative Plug, Power Bank In-vehicle, Computer Power Strip, Charge the mobile phone charger.

Express Face List

SF Express, Yunda, China Post, Zhongtong, Bestone, Dada Bond, Cainiao Package, Express 100

Specifications

Printing Parameters	Resolution: 203 Dpi (8 Dots/mm)	Electrical characteristics	Interface Type: Type-C, Charger (Optional)	
	printing Method: Thermal Line Printing		Battery Capacity: 2500mAh/7.4V Rechargeable Lithium Battery	
	Printing Speed: Up To 120 mm/s		Charging Time: 3~3.5 hours; computer USB: 4 hours	
	Printing Density: 576 Dots/Line		Standby Time: No Less Than 15 Days	
	Maximum Printing Width: 72mm		Number Of Continuous Printing Sheets: 1300~1400 Sheets (Sheet Height: 200mm)	
Physical Characteristics	Case Material: PC+ABS, TPU soft rubber	Reliability	Power Adapter: Input AC 100~240V, 50~60Hz, Output DC 5V, 2000mA	
	Dimensions: 118(D) x 105(W) x 62(H) MM		Detection Function (Sensor): Positive And Negative Black Mark, Gap Detection, Lack Of Electricity, Lack Of Paper, Open Cover, Overheating Alarm	
Environmental Conditions	Weight: 450g		Software Function	TPH Life (Printing Length): 50 Kilometers
	Operating conditions: -0°C~52°C, humidity (non-condensing) 10~85%			Number Of Pulses: 1.0 x 10 To The 8th Power Pulses (Printing Rate 12.5%)
Paper Specifications	Storage Conditions: -20°C~60°C, Humidity (non-condensing) 5~90%			Character Set
	Paper Type: Gap Paper, Continuous Paper, Front And Back black Mark Paper	IP Protection Level: IP54 (With Third-party Laboratory Certification)		
	Media Width: 30~80mm	Android/IOS Printing And Editing Software		
	Medium Height: Minimum 15mm	Windows Driver		
	Paper thickness: 0.053mm~0.16mm	WeChat Print Applet		
	Paper roll Diameter: Up To 50mm	Bar Tender Software		
	Peeling Mode: Tearing Blade	Screen Operation Interface language: Chinese, English		
Gap Height: Minimum 2mm	Special Printing Function: Watermark Printing (Optional), Two-color Printing (Optional)			
Black Mark Height: Minimum 2mm	Operating Switches, Buttons, Display Screen: Power Button, Paper Output Button, Lid Open Button, OLED Display			
Storage	Flash: 16 MB	Product Standard Number: GB/T29267-2012		
	RAM: 8 MB	Radio Model Approval Code: Bluetooth CMIIT ID: 2020DP5109(M)		
Communication Interface	Usb 2.0 (Standard)			
	Bluetooth 4.2 (Standard Configuration)			
	Bluetooth 5.0 (Optional)			
	WIFI 2.4G/5G (Optional)			
	Processor: Cortex-M7			
	Instruction Set: TSPL, CPCL, ESC/POS, ZPL, JPL			