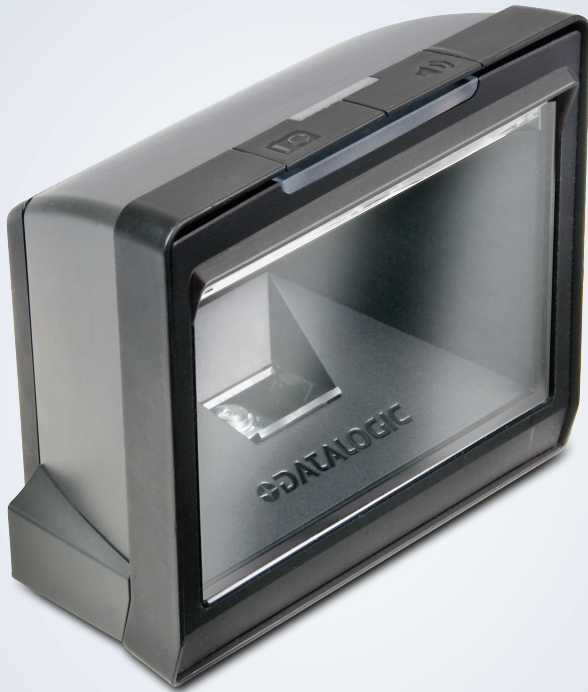


MAGELLAN™ 3200VSi



ON-COUNTER HIGH PERFORMANCE BAR CODE READER

The Magellan™ 3200VSi bar code reader brings Datalogic's new imaging technology to the high-volume point-of-sale. It is the first bar code scanner to duplicate the speed and wide field-of-view of high-performance omnidirectional laser scanners while adding the benefits associated with imaging. This imaging technology provides outstanding performance when capturing hard-to-read bar codes such as truncated (short), out-of-spec, poorly printed and GS1 DataBar™ codes, and provides support for both linear (1D) and 2D label decoding. The Magellan 3200VSi imager enables both sweep and presentation scanning techniques ensuring maximum productivity and ergonomic ease.

BUILT TO LAST

With the renowned quality and reliability famous in all Magellan products, the Magellan 3200VSi imager achieves new levels of product reliability by utilizing a solid-state design that does not require the use of laser modules or spinning motors, ensuring years of worry-free operation.

SOFTWARE MANAGEMENT

Unique features not found on any point-of-sale scanner include a Micro-SD card reader to help with software management, upgrading, and maintenance. Managing software with the Magellan 3200VSi reader is very flexible and includes multiple methods to load new software or to modify existing configuration files and application firmware.

FEATURES

- Datalogic's high performance Imaging Technology
- Linear and 2D barcode reading
- Solid-state electronics
- Software driven - flexible and upgradeable
- Micro SD card slot
- Multiple interfaces in every unit
- RS-232 auxiliary port
- Image capture
- Illumix™ intelligent illumination technology reads barcodes from mobile phones or PDAs
- EASEOFCARE Service Plans offer a wide range of service options to protect your investment, ensuring maximum productivity and ROI

INDUSTRY - APPLICATION

- Retail: Point of Sale, Mobile Marketing Capabilities, Age Verification, 2D barcodes



MAGELLAN 3200VSi

TECHNICAL SPECIFICATIONS

DECODING CAPABILITY

1D / Linear Codes	Auto discriminates all standard 1D codes including GS1 DataBar™ linear codes.
2D Codes	Aztec Code; Data Matrix (ECC200 Only); MaxiCode; QR Code
Stacked Codes	GS1 DataBar Composites; GS1 DataBar Expanded Stacked; GS1 DataBar Stacked; GS1 DataBar Stacked Omnidirectional; MicroPDF417; PDF417

ELECTRICAL

AC Power Requirements	AC Input: 90-264 VAC, 47-63 Hz
Power Consumption	Operating (Maximum): 8.75 Watts Operating (Nominal): 2.8 Watts Sleep Mode: 2.0 Watts

ENVIRONMENTAL

Ambient Light	0 - 86,100 lux
ESD Protection (Air Discharge)	25 kV
Humidity (Non-condensing)	5 - 95%
Temperature	Operating: 0 to 40 °C / 32 to 104 °F Storage/Transport: -40 to 70 °C / -40 to 158 °F

INTERFACES

Interfaces	USB Keyboard; USB COM; OEM USB; RS-232; IBM 46XX
Auxiliary Ports	Powered RS-232

OPTIONAL FEATURES

EAS Features	Checkpoint Systems: Integrated EAS hardware will work with Counterpoint IX and Evolve D11 models; Sensormatic: Good Read Acknowledgement
Value Added Features	Diagnostic Reporting; Host Download; Productivity Index Reporting™ (PIR)

PHYSICAL CHARACTERISTICS

Dimensions	14.2 x 15.2 x 8.2 cm / 5.6 x 6.0 x 3.2 in
Weight	0.6 kg / 1.3 lb

READING PERFORMANCE

Image Capture	Graphic Formats: BMP, JPEG
Image Sensor	1280 x 1024
Light Source	Illumination: Multiple diffused 625nm LEDs
Print Contrast Ratio (Minimum)	25%
Read Height	14.0 cm / 5.5 in
Read Rate (Maximum)	39 Million pixels per second
Reading Angle	Pitch: +/- 65°; Roll (Tilt): 0 - 360°; Skew (Yaw): +/- 75°
Reading Indicators	Beeper (Adjustable Tone and Volume); Good Read LED; Good Transmission
Resolution (Maximum)	5 mil

READING RANGES

Typical Depth of Field	Minimum distance determined by symbol length and scan angle. Printing resolution, contrast, and ambient light dependent. 1D / Linear Codes 5 mils: 1.3 to 6.4 cm / 0.5 to 2.5 in 7.5 mils: 1.3 to 11.4 cm / 0.5 to 4.5 in 10 mils: 0 to 15.2 cm / 0 to 6.0 in 13 mils: 0 to 20.3 cm / 0 to 8.0 in 20 mils: 0 to 22.9 cm / 0 to 9.0 in 2D Codes (Optional) 6.6 mils: PDF: 3.8 to 10.2 cm / 1.5 to 4.0 in 10 mils: PDF: 0 to 18.0 cm / 0 to 7.0 in 15 mils: PDF: 0 to 20.3 cm / 0 to 8.0 in 10 mils: Data Matrix: 0 to 6.4 cm / 0 to 2.5 in 24 mils: Data Matrix: 0 to 20.3 cm / 0 to 8.0 in
-------------------------------	---

SAFETY & REGULATORY

Agency Approvals	The product meets necessary safety and regulatory approvals for its intended use. The Quick Reference Guide for this product can be referred to for a complete list of certifications.
Environmental Compliance	Complies to China RoHS; Complies to EU RoHS
LED Classification	EN60825-1 Class 1 LED; IEC 60825-1 Class 1 LED Product

UTILITIES

Scanner Configuration	Scanalyzer can be used for scanner configuration. Available for download at no charge.
OPOS / JavaPOS	OPOS and JavaPOS Utilities are available for download at no charge.
Remote Host Download	Lowers service costs and improves operations.

WARRANTY

Warranty	3-Year Factory Warranty
-----------------	-------------------------

ACCESSORIES

Mounts/Stands



11-0405 Riser Mount



11-0406 Table/Wall Mount